


Brio Series





LED ALUMINUM PROFILE


Model No. BR-B-ALP067X

- Creates a homogenous light with uniform intensity
- The extrusion made from high quality aluminum
- Suitable for strips width upto 11mm wide
- The extrusion can be Bendable
- Customized length upto 4 meters
- Anodized / Powder coated
- Excellent heat sink

 Beam angle: 120°

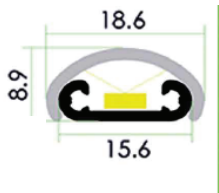
 Weight:<0.15kg/m

 Max power:<15w/m

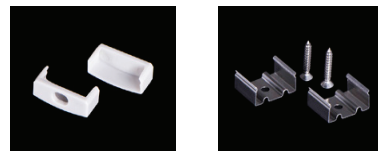
 Mounting: Surface

Applications- Decorative & Architectural

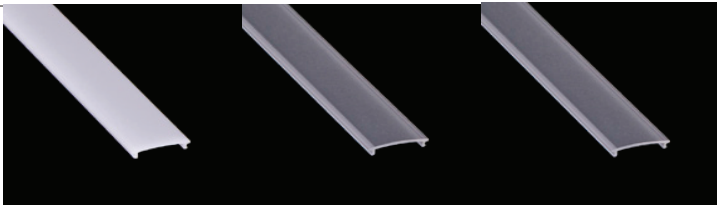
DIMENSIONS



ACCESSORIES



DIFFUSERS

Diffuser type			
	Opal Matt	Frosted	Clear
Model no.	BR-B-ALP067M	BR-B-ALP067F	BR-B-ALP067F
Transmittance	50%	75%	90%

INSTALLATION

