

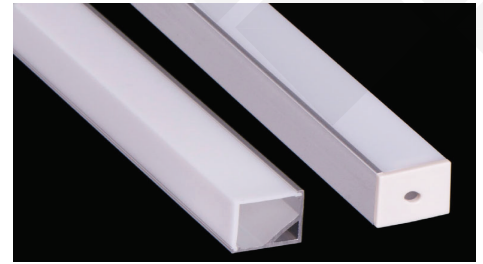
Brio Series

LED ALUMINUM PROFILE

Model No. BR-C-ALP030X

- Creates a homogenous light with uniform intensity
- The extrusion made from high quality aluminum
- Suitable for strips width upto 10mm wide
- The extrusion can be corner mounted
- Customized length upto 4 meters
- Anodized / Powder coated
- Adjustable clips are optional
- Excellent heat sink

Applications- wall corners, coves, stairs & furniture.



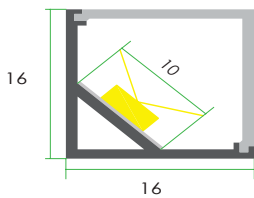
Beam angle: 120°

Weight: <0.17kg/m

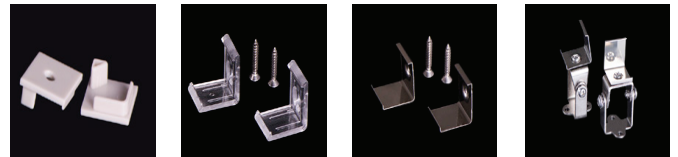
Max power: <30w/m

Mounting: Corner

DIMENSIONS



ACCESSORIES



DIFFUSERS

Diffuser type			
	Opal Matt	Frosted	Clear
Model no.	BR-C-ALP030M	BR-C-ALP030F	BR-C-ALP030C
Transmittance	42%	54%	57%

INSTALLATION

