

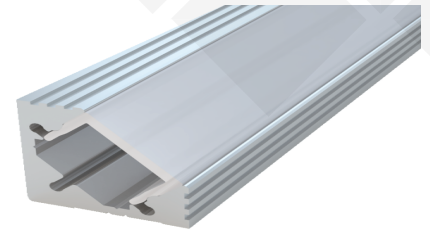
Brio Series


LED ALUMINUM PROFILE


Model No. BR-C-ALP034X


- Creates a homogenous light with uniform intensity
- The extrusion made from high quality aluminum
- Suitable for strips width upto 12mm wide
- The extrusion can be corner mounted
- Customized length upto 4 meters
- Anodized / Powder coated
- Adjustable clips are optional
- Excellent heat sink


Applications- wall corners, coves, stairs & furniture.



 Beam angle: 120°

 Weight: <0.34kg/m

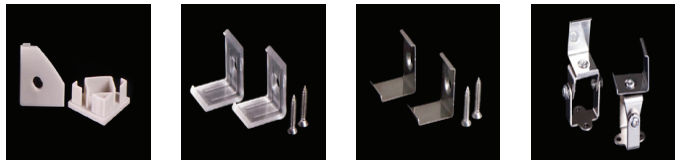
 Max power: <25w/m

 Mounting: Corner


DIMENSIONS



ACCESSORIES



DIFFUSERS

Diffuser type			
	Opal Matt	Frosted	Clear
Model no.	BR-C-ALP034M	BR-C-ALP034F	BR-C-ALP034C
Transmittance	50%	75%	90%

INSTALLATION

