

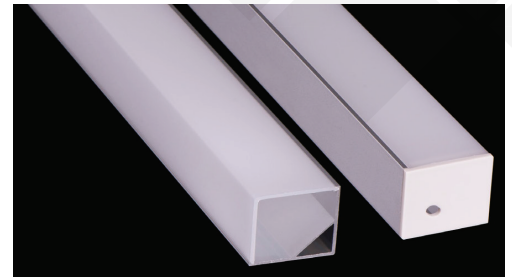
# Brio Series

## LED ALUMINUM PROFILE

Model No. BR-C-ALP035X

- Creates a homogenous light with uniform intensity
- The extrusion made from high quality aluminum
- Suitable for strips width upto 20mm wide
- The extrusion can be corner mounted
- Customized length upto 4 meters
- Anodized / Powder coated
- Spring clips / mounting clips are optional
- Excellent heat sink

Applications- wall corners, coves, stairs & furniture.



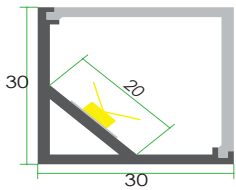
Beam angle: 120°

Weight:<0.34kg/m

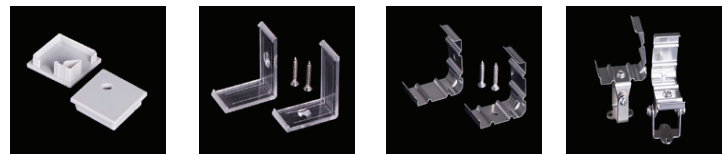
Max power:<30w/m

Mounting: Corner

## DIMENSIONS



## ACCESSORIES



## DIFFUSERS

Diffuser type			
	Opal Matt	Frosted	Clear
Model no.	BR-C-ALP035M	BR-C-ALP035F	BR-C-ALP035C
Transmittance	41%	43%	95%

## INSTALLATION

