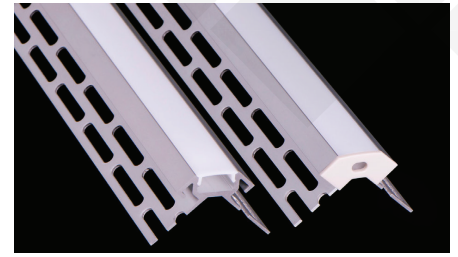



Brio Series


LED ALUMINUM PROFILE


Model No. BR-C-ALP038X



- Creates a homogenous light with uniform intensity
- The extrusion made from high quality aluminum
- Suitable for strips width upto 12mm wide
- The extrusion can be corner mounted
- Customized length upto 4 meters
- Anodized / Powder coated
- Spring clips / mounting clips are optional
- Excellent heat sink

 Beam angle: 100°

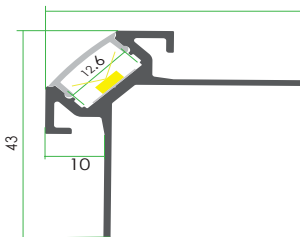
 Weight: <0.49kg/m

 Max power: <15w/m

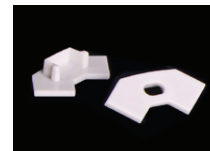
 Mounting: Corner

Applications- wall corners, coves, stairs & furniture.


DIMENSIONS



ACCESSORIES



DIFFUSERS

Diffuser type			
	Opal Matt	Frosted	Clear
Model no.	BR-C-ALP038M	BR-C-ALP038F	BR-C-ALP038C
Transmittance	52%	81%	93%

INSTALLATION

