

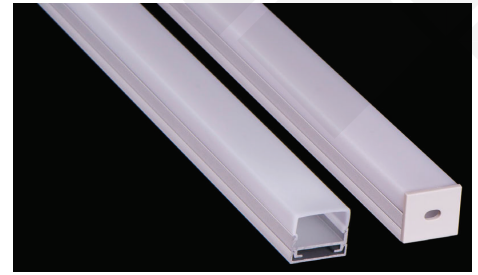
Brio Series


LED ALUMINUM PROFILE


Model No. BR-CM-ALP042X


- Creates a homogenous light with uniform intensity
- The extrusion made from high quality aluminum
- Suitable for strips width upto 16mm wide
- The extrusion can be ceiling type
- Customized length upto 4 meters
- Anodized / Powder coated
- Excellent heat sink


Applications- under cabinet, stairs, closets, furniture & coves.



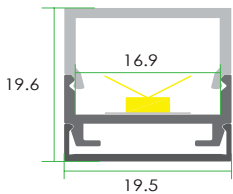
 Beam angle: 120°

 Weight: <0.25kg/m

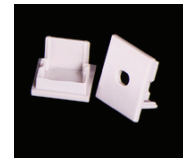
 Max power: <20w/m

 Mounting: Surface Ceiling

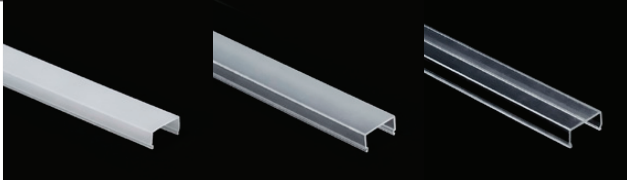
DIMENSION



ACCESSORIES



DIFFUSERS

Diffuser type			
	Opal Matt	Frosted	Clear
Model no.	CM-ALP042M	CM-ALP042F	CM-ALP042C
Transmittance	51%	65%	73%

INSTALLATION

