

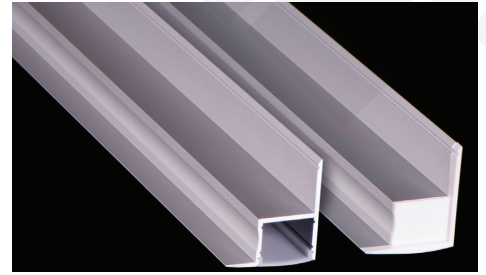
Brio Series

LED ALUMINUM PROFILE

Model No. BR-CM-ALP047X

- Creates a homogenous light with uniform intensity
- The extrusion made from high quality aluminum
- Suitable for strips width upto 20mm wide
- The extrusion can be ceiling type
- Customized length upto 4 meters
- Anodized / Powder coated
- Excellent heat sink

Applications- under cabinet, stairs, closets, furniture & coves.



Beam angle: 60°



Weight:<0.46kg/m

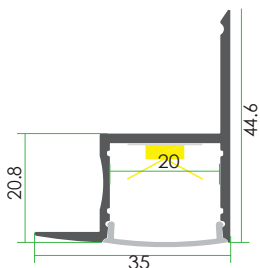


Max power:<20w/m



Mounting: Surface Ceiling

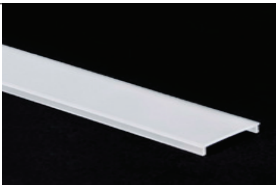
DIMENSION



ACCESSORIES



DIFFUSERS

Diffuser type	
	Opal Matt
Model no.	CM-ALP047M
Transmittance	39%

INSTALLATION

