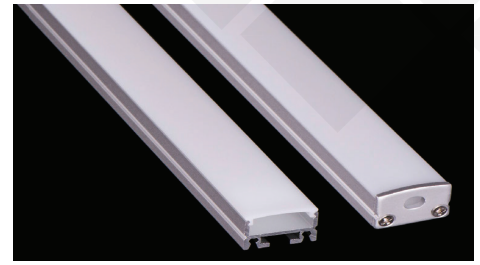


Brio Series

LED ALUMINUM PROFILE

Model No. BR-CM-ALP049X

- Creates a homogenous light with uniform intensity
- The extrusion made from high quality aluminum
- Suitable for strips width upto 16mm wide
- The extrusion mounting can be ceiling type
- Customized length upto 4 meters
- Anodized / Powder coated
- Excellent heat sink



Beam angle: 120°

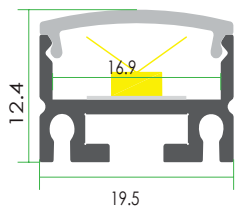
Weight: <0.22kg/m

Max power: <20w/m

Mounting: Surface / Ceiling

Applications- under cabinet, stairs, closets, furniture & coves.

DIMENSION



ACCESSORIES



DIFFUSERS

Diffuser type		
	Opal Matt	Frosted
Model no.	CM-ALP049M	CM-ALP049F
Transmittance	69%	83%

INSTALLATION

