

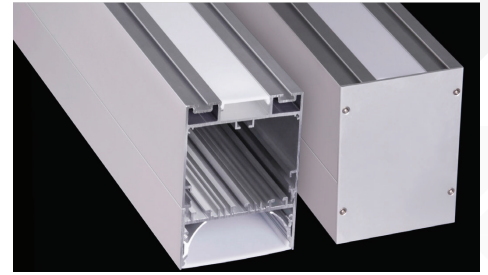
# Brio Series

## LED ALUMINUM PROFILE

Model No. BR-DP-ALP092X

- Creates a homogenous light with uniform intensity
- The extrusion made from high quality aluminum
- Suitable for strips width upto 44mm wide
- The extrusion can be Suspension type
- Customized length upto 3 meters
- Anodized / Powder coated
- Joiners are optional
- Excellent heat sink

Applications- Arcitectoral, highrise ceilings .



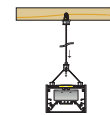
Beam angle: 120° & 110°



Weight:<3.11kg/m

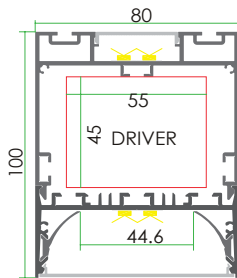


Max power:<60w/m



Mounting: Suspension

## DIMENSION



## ACCESSORIES



## DIFFUSER

Diffuser type			
	Opal Matt	Frosted	Clear
Model no.	BR-DP-ALP092M	BR-DP-ALP092F	BR-DP-ALP092C
Transmittance	63%	89%	95%

## INSTALLATION

