

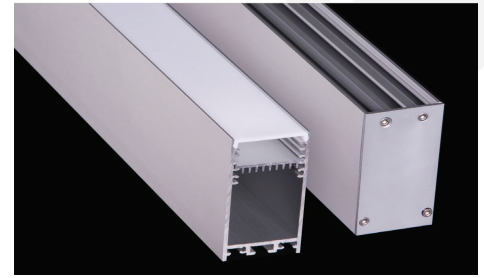
Brio Series

LED ALUMINUM PROFILE

Model No. BR-DP-ALP093X

- Creates a homogenous light with uniform intensity
- The extrusion made from high quality aluminum
- Suitable for strips width upto 31mm wide
- The extrusion can be Suspension type
- Customized length upto 3 meters
- Anodized / Powder coated
- Surface mounting brackets / Joiners are optional
- Excellent heat sink

Applications- Arcitectoral, highrise ceilings .



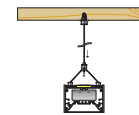
Beam angle: 75°



Weight:<1.24kg/m

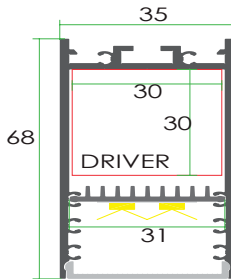


Max power:<30w/m



Mounting: Suspension

DIMENSION



ACCESSORIES



DIFFUSER

Diffuser type			
	Opal Matt	Frosted	Clear
Model no.	BR-DP-ALP093M	BR-DP-ALP093F	BR-DP-ALP093C
Transmittance	63%	89%	95%

INSTALLATION

