

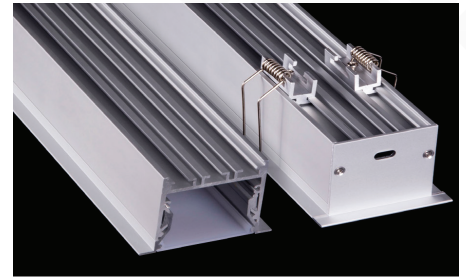
Brio Series

LED ALUMINUM PROFILE

Model No. BR-PR-ALP081X

- Creates a homogenous light with uniform intensity
- The extrusion made from high quality aluminum
- Suitable for strips width upto 46mm wide
- The extrusion can be recessed type
- Customized length upto 4 meters
- Anodized / Powder coated
- Surface mounting brackets are optional
- Excellent heat sink

Applications- Architectural, highrise ceilings & coves.



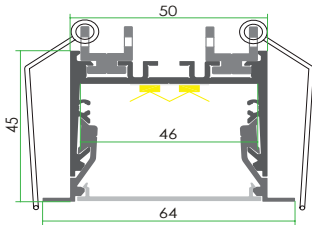
Beam angle: 70°

Weight: <1.43kg/m

Max power: <60w/m

Mounting: Recessed

DIMENSION



ACCESSORIES



DIFFUSER

Diffuser type		
	Opal Matt	Frosted
Model no.	BR-PR-ALP081M	BR-PR-ALP081F
Transmittance	67%	90%

INSTALLATION

