

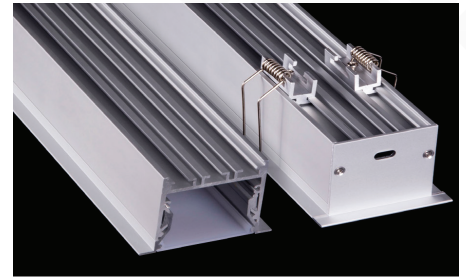
Brio Series

LED ALUMINUM PROFILE

Model No. BR-PR-ALP082X

- Creates a homogenous light with uniform intensity
- The extrusion made from high quality aluminum
- Suitable for strips width upto 55mm wide
- The extrusion can be recessed type
- Customized length upto 4 meters
- Anodized / Powder coated
- Surface mounting brackets / joiners are optional
- Excellent heat sink

Applications- Arcitectoral, highrise ceilings & coves.



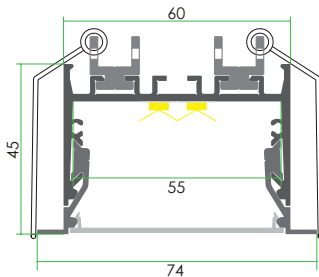
Beam angle: 80°

Weight:<1.47kg/m

Max power:<60w/m

Mounting: Recessed

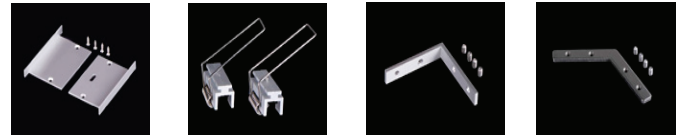
DIMENSION



DIFFUSER

Diffuser type		
	Opal Matt	Frosted
Model no.	BR-PR-ALP082M	BR-PR-ALP082F
Transmittance	63%	89%

ACCESSORIES



INSTALLATION

