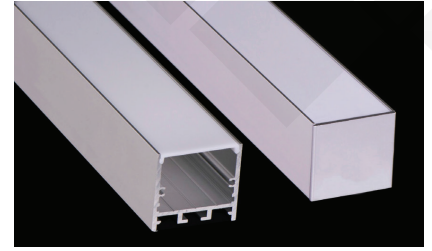



# Brio Series


## LED ALUMINUM PROFILE


Model No. BR-PS-ALP071X

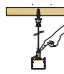


- Creates a homogenous light with uniform intensity
- The extrusion made from high quality aluminum
- Suitable for strips width upto 31mm wide
- The extrusion can be suspension type
- Customized length upto 4 meters
- Anodized / Powder coated
- Excellent heat sink

 Beam angle: 60°

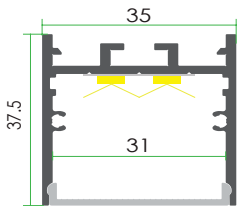
 Weight: <0.69kg/m

 Max power: <40w/m

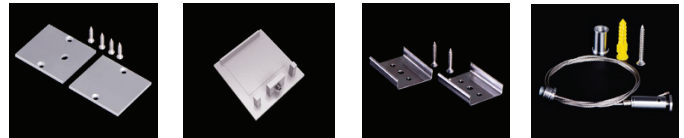
 Mounting: Surface/ Suspension

Applications : High raise celings, Gypsum celings & Architectural.


## DIMENSION



## ACCESSORIES



## DIFFUSERS

Diffuser type			
	Opal Matt	Frosted	Clear
Model no.	PS-ALP071M	PS-ALP071F	PS-ALP071C
Transmittance	63%	89%	95%

## INSTALLATION

