

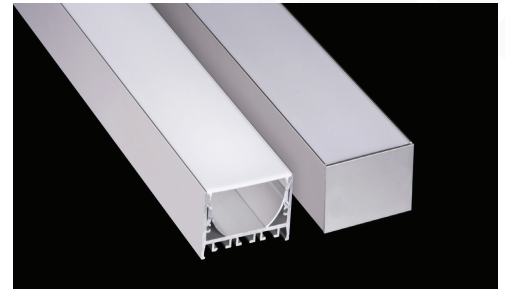
# Brio Series


## LED ALUMINUM PROFILE


Model No. BR-PS-ALP073X


- Creates a homogenous light with uniform intensity
- The extrusion made from high quality aluminum
- Suitable for strips width upto 24mm wide
- The extrusion can be suspension type
- Customized length upto 4 meters
- Anodized / Powder coated
- Surface mounting brackets are optional
- Excellent heat sink


Applications- Arcitectoral, highrise ceilings & coves.



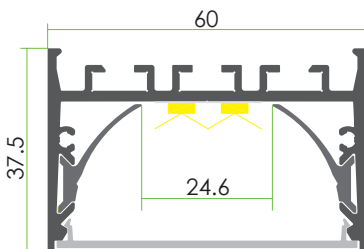
 Beam angle: 90°

 Weight:<1.09kg/m

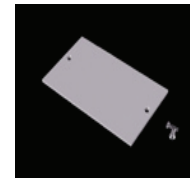
 Max power:<60w/m

 Mounting: Surface/  
Suspension



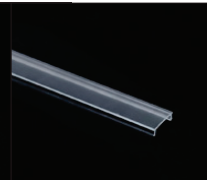
## DIMENSION



## ACCESSORIES



## DIFFUSER

|               |   |   |   |
|---------------|---|---|---|
| Diffuser type |  |  |  |
|               | Opal Matt   | Frosted   | Clear   |
| Model no.     | BR-PS-ALP073M   | BR-PS-ALP073F   | BR-PS-ALP073C   |
| Transmittance | 63%   | 89%   | 95%   |

## INSTALLATION

