

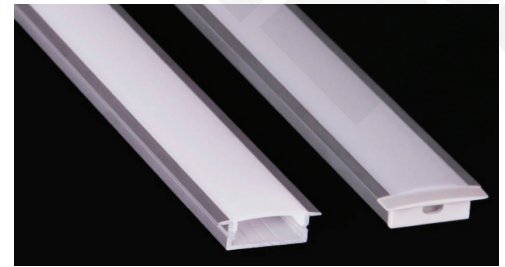
# Brio Series

## LED ALUMINUM PROFILE

Model No. BR-R-ALP022X

- Creates a homogenous light with uniform intensity
- The extrusion made from high quality aluminum
- Suitable for strips width upto 20mm wide
- The extrusion can be recessed type
- Customized length upto 4 meters
- Anodized / Powder coated
- Mounting clips are optional
- Excellent heat sink

Applications- under cabinet, stairs, closets, furniture & joinery.



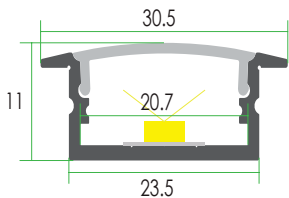
Beam angle: 110°

Weight: <0.22kg/m

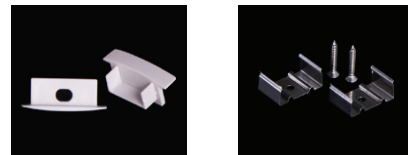
Max power: <20w/m

Mounting: Recessed

## DIMENSIONS



## ACCESSORIES



## DIFFUSERS

Diffuser type			
	Opal Matt	Frosted	Clear
Model no.	BR-R-ALP022M	BR-R-ALP022F	BR-R-ALP022C
Transmittance	70%	91%	94%

## INSTALLATION

