

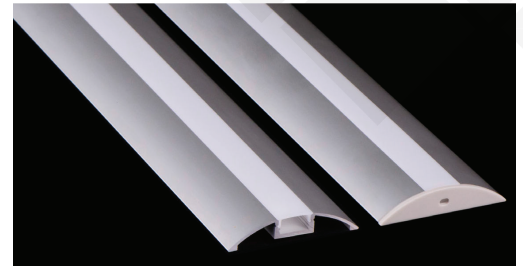
Brio Series

LED ALUMINUM PROFILE

Model No. BR-R-ALP025X

- Creates a homogenous light with uniform intensity
- The extrusion made from high quality aluminum
- Suitable for strips width upto 12mm wide
- The extrusion can be recessed type
- Customized length upto 4 meters
- Anodized / Powder coated
- Mounting clips are optional
- Excellent heat sink

Applications- under cabinet, stairs, closets, furniture & joinery.



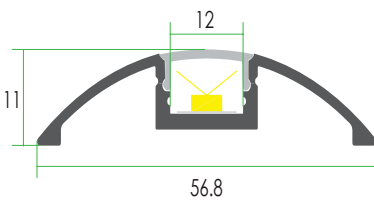
Beam angle: 100°

Weight: <0.36kg/m

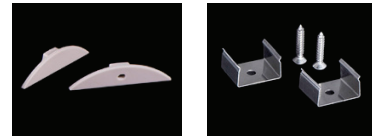
Max power: <20w/m

Mounting: Recessed

DIMENSIONS



ACCESSORIES



DIFFUSERS

Diffuser type			
	Opal Matt	Frosted	Clear
Model no.	BR-R-ALP025M	BR-R-ALP025F	BR-R-ALP025C
Transmittance	52%	81%	93%

INSTALLATION

