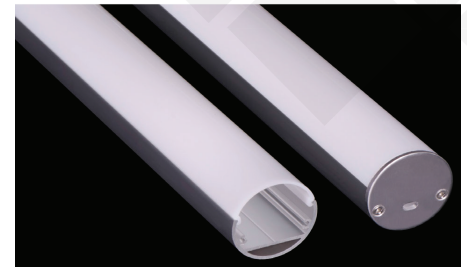


# Brio Series

## LED ALUMINUM PROFILE

Model No. BR-RP-ALP057X

- Creates a homogenous light with uniform intensity
- The extrusion made from high quality aluminum
- Suitable for strips width upto 24mm wide
- The extrusion can be round type
- Customized length upto 4 meters
- Anodized / Powder coated
- Excellent heat sink



Beam angle: 90°



Weight: <0.44kg/m



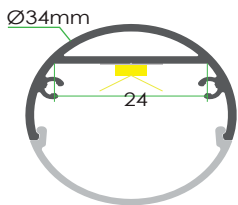
Max power: <30w/m



Mounting: Round

Applications- Decorative & wardrobes

## DIMENSIONS



## ACCESSORIES



## DIFFUSERS

Diffuser type		
	Opal Matt	Frosted
Model no.	BR-RP-ALP057M	BR-RP-ALP057F
Transmittance	40%	45%

## INSTALLATION

