

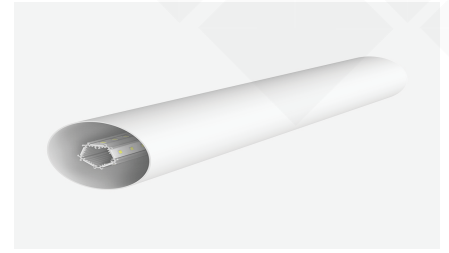
Brio Series

LED ALUMINUM PROFILE

Model No. BR-RP-ALP059X

- Creates a homogenous light with uniform intensity
- The extrusion made from high quality aluminum
- Suitable for strips width upto 12mm wide
- The extrusion can be round suspension type
- Customized length upto 4 meters
- Anodized / Powder coated
- Excellent heat sink

Applications- Decorative & Architectural



Beam angle: 360°



Weight:<1.20kg/m

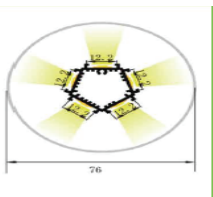


Max power:<50w/m



Mounting: Suspension

DIMENSIONS



ACCESSORIES



DIFFUSERS

Diffuser type		
	Opal Matt	Frosted
Model no.	BR-RP-ALP059M	BR-RP-ALP059F
Transmittance	65%	88%

INSTALLATION

