

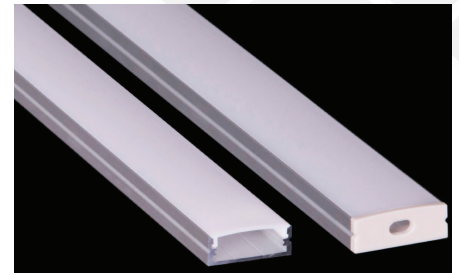
# Brio Series

## LED ALUMINUM PROFILE

Model No. BR-S-ALP003X

- Creates a homogenous light with uniform intensity
- The extrusion made from high quality aluminum
- Suitable for strips width upto 20mm wide
- The extrusion can be surface mounted
- Customized length upto 4 meters
- Anodized / Powder coated
- Adjustable mounting brackets are optional
- Excellent heat sink

Applications- under cabinet, stairs, closets, furniture & coves.



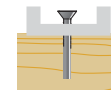
Beam angle: 110°



Weight:<0.21kg/m

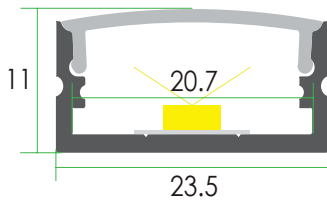


Max power:<20w/m

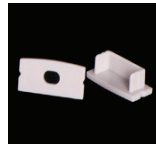


Mounting: Surface

## DIMENSION



## ACCESSORIES



## DIFFUSERS

Diffuser type			
	Opal Matt	Frosted	Clear
Model no.	BR-S-ALP003M	BR-S-ALP003F	BR-S-ALP003C
Transmittance	70%	91%	94%

## INSTALLATION

