

# Brio Series

## LED ALUMINUM PROFILE

Model No. BR-S-ALP007X



- Creates a homogenous light with uniform intensity
- The extrusion made from high quality aluminum
- Suitable for strips width upto 8mm wide
- The extrusion can be surface mounted
- Customized length upto 4 meters
- Anodized / Powder coated
- Adjustable mounting brackets are optional
- Excellent heat sink

Beam angle: 30°

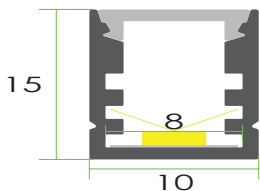
Weight: <0.15kg/m

Max power: <20w/m

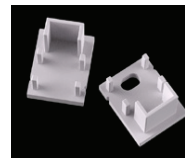
Mounting: Surface

Applications- under cabinet, stairs, closets, furniture & coves.

## DIMENSION



## ACCESSORIES



## DIFFUSERS

Diffuser type	
	Opal Matt
Model no.	BR-S-ALP007M
Transmittance	59%

## INSTALLATION

