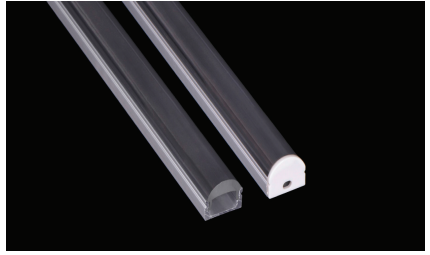


Brio Series

LED ALUMINUM PROFILE

Model No. BR-S-ALP009X



Creates a homogenous light with uniform intensity
 The extrusion made from high quality aluminum
 Suitable for strips width upto 12mm wide
 The extrusion can be surface mounted
 Customized length upto 4 meters
 Anodized / Powder coated
 Adjustable mounting brackets are optional
 Excellent heat sink

Beam angle: 60°

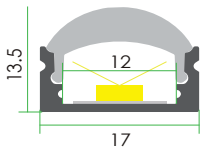
Weight: <0.23kg/m

Max power: <15w/m

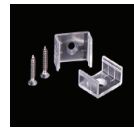
Mounting: Surface

Applications- under cabinet, stairs, closets, furniture & coves.

DIMENSION



ACCESSORIES



DIFFUSER

Diffuser type			
	Opal Matt	Frosted	Clear
Model no.	BR-S-ALP009M	BR-S-ALP009F	BR-S-ALP00C
Transmittance	45%	95%	109%

INSTALLATION

