

Brio Series

LED ALUMINUM PROFILE

Model No. BR-S-ALP014X



- Creates a homogenous light with uniform intensity
- The extrusion made from high quality aluminum
- Suitable for strips width upto 5.5mm wide
- The extrusion can be surface mounted
- Customized length upto 4 meters
- Anodized / Powder coated
- Adjustable mounting brackets are optional
- Excellent heat sink

Beam angle: 44°

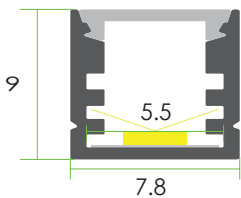
Weight:<0.10kg/m

Max power:<15w/m

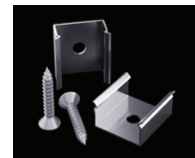
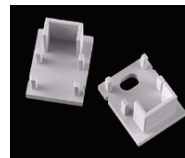
Mounting: Surface

Applications- under cabinet, stairs, closets, furniture & coves.


DIMENSION



ACCESSORIES



DIFFUSERS

Diffuser type	
	Opal Matt
Model no.	BR-S-ALP014M
Transmittance	52%

INSTALLATION

