

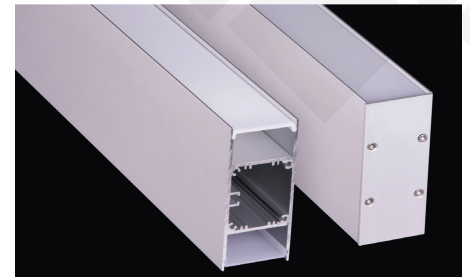
Brio Series

LED ALUMINUM PROFILE

Model No. BR-W-ALP062X

- Creates a homogenous light with uniform intensity
- The extrusion made from high quality aluminum
- Suitable for strips width upto 31mm wide
- The extrusion can be wall mount type
- Customized length upto 4 meters
- Anodized / Powder coated
- Excellent heat sink

Applications- Decorative & Architectural



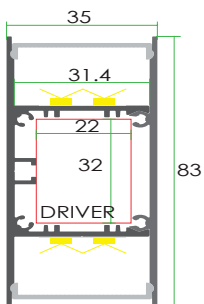
Beam angle: 75°

Weight: <1.40kg/m

Max power: <30w/m

Mounting: Wall

DIMENSIONS



ACCESSORIES



DIFFUSERS

Diffuser type			
	Opal Matt	Frosted	Clear
Model no.	BR-W-ALP062M	BR-W-ALP062F	BR-W-ALP062F
Transmittance	63%	89%	95%

INSTALLATION

